

Chapter News



ITLS Introduces eTrauma, Offers Implementation Guide

ITLS eTrauma, the new online course developed by International Trauma Life Support, sets the standard with online education that's interactive, flexible, accessible, and affordable for all. ITLS eTrauma covers the eight hours of ITLS Provider classroom instruction in a self-paced format that fits the non-stop lifestyle of trauma care providers.

ITLS has put together guidelines for eTrauma implementation to help answer your questions, provide helpful tips and suggestions, and ease the process of making ITLS eTrauma a new part of your Chapter offerings. This is the essential resource for everything Chapters need to know about eTrauma.

The ITLS eTrauma Guidelines for Implementation are available free of charge in the Chapter Coordinator & Medical Director section of ITRAUMA.org. Download the PDF for quick reference and feel free to share this resource with your approved Course Coordinators.

More eTrauma resources available to Chapters are discussed on Page 2.



ITLS
eTrauma

ITLS eTrauma Overview

The ITLS eTrauma program consists of 13 lesson modules corresponding to Provider course lectures and based on the didactic chapters of the 6th edition ITLS for Prehospital Care Providers manual.

Because of the program's comprehensive approach, ITLS eTrauma is appropriate for all levels of EMS personnel—from EMT-Bs and first responders to advanced EMTs, paramedics, trauma nurses and physicians. Students register for either the Advanced-level or Basic-level course to ensure that they are tested only on material appropriate to their skill level.

ITLS eTrauma is accredited by CECBEMS to provide 8 hours of continuing edu-

Continued on Page 2

February 2010

International Trauma Life Support

3000 Woodcreek Drive, Suite 200
Downers Grove, IL 60515
USA

phone 888.495.ITLS
int'l 630.495.6442
fax 630.495.6404
web www.itrauma.org

Introducing ITLS eTrauma

From Page 1

ation credit for all students who complete the program. Students must successfully complete Lesson Quizzes at the end of each of the 13 modules before credit is granted.

ITLS eTrauma has been developed as the newest tool in the ITLS trauma training tool box. This multifaceted solution can be utilized in two different ways:

1. For continuing education

only: The program is self-paced and flexible to meet the time constraints of students who juggle multiple commitments. Students looking for continuing education hours in trauma specifically or in emergency care in general can work through the 13 lessons as quickly or as slowly as their schedule permits. (Students may access eTrauma for 1 year from the date of their first login.)

ITLS eTrauma is currently accredited to provide CECBEMS credit to EMS personnel. ITLS is exploring options to provide continuing medical education for physicians and physician assistants and nursing contact hours for nurses.

2. For ITLS Provider certification:

Students who wish to become ITLS Provider certified can use ITLS eTrauma as the didactic part of a flexible alternative to the traditional 2-day in-person ITLS Provider course as a method for earning ITLS certification.

After successful completion of ITLS eTrauma, students become eligible to register for an ITLS Completer Course run through one of ITLS' Chapters or held in conjunction with a national or international EMS event. The Completer Course provides a setting in which to learn, practice, and demonstrate proficiency of the necessary skills that comprise the practical assessment of the ITLS Provider course, thus earning ITLS Basic or Advanced certification.

Other Chapter Resources

In addition to the eTrauma Guidelines for Implementation, ITLS has put together several other resources for Chapters to use.

ITLS wants Chapter personnel to be able to demo ITLS eTrauma and become more familiar with this new product. Lessons 1 and 2 of the program are available for download in the Chapter Coordinator & Medical Director section of ITRAUMA.org. Chapters are invited to try out the program and learn how their students will navigate each lesson.

ITLS has also put together marketing materials that may be utilized by Chapters to help promote ITLS eTrauma. A promotional brochure, 1-page flier, and poster files are available for download.

Completer Course resources, including sample agendas, may also be downloaded from the site.

Board Sets New Policy on Unpaid Course Fees

The ITLS Board of Directors has passed a new policy effective immediately regarding Chapters delinquent on course payments.

Since the implementation of the Course Management System, the ITLS Finance and Chapter Support Committees have made numerous efforts to accommodate Chapters' transitions and aid them in making timely payments.

However, many chapters remain delinquent in their payment of students fees to ITLS International.

Under the new policy, a Chapter's access to printing cards and certificates through the CMS will be suspended if the chapter's unpaid courses account for more than 50% of the total courses and/or exceed \$5,000 in fees owed for more than 90 days from the course complete date.

The Chapter's ability to print cards and certificates will be disabled until the Chapter implements a corrective action plan in consultation with ITLS International.

Instructor Update Online Now Available

The ITLS 6th Edition Instructor Update Online program is now available.

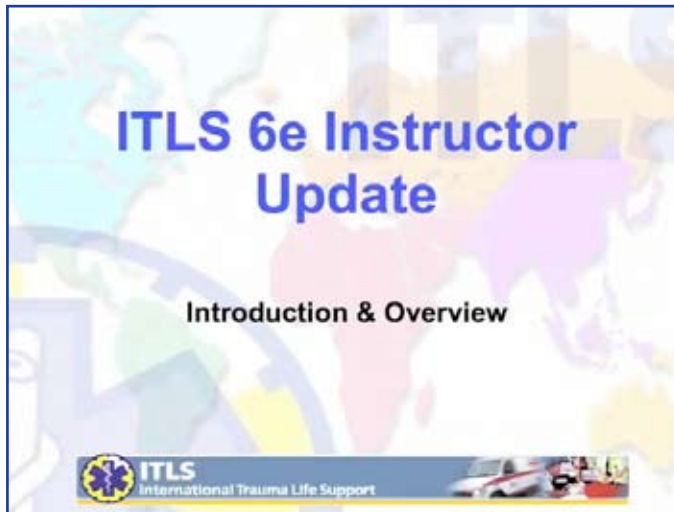
The Instructor Update Online is video-based (MP4 format), available to download for \$25. Load the video onto your iPod or other video player for a portable podcast

solution. Or watch the video directly on your computer using QuickTime or other video software.

After watching the 1-hour video in its entirety and completing a brief exit survey, current instructors will be recertified and receive a renewed Instructor card. They will also receive a certificate of CECBEMS continuing education credit.

The program may be utilized by any instructor whose card expired on or after January 1, 2006. (If a card expired before this time period, the instructor will be sent to his Chapter and asked to begin the Instructor certification process again.)

The Instructor Update Online program will be available for purchase through December 31, 2010. All parts of the program must be completed by this date in order to receive an updated card, including the mandatory exit survey required after viewing the video.



Preview for Chapter Personnel

Chapter Coordinators and Medical Directors are invited to preview the program at no charge. If you wish to download the video, please email Sue McDonough at suem@itrauma.org to request access. A password will be sent to you.

Please note that Chapter Coordinators and Medical Directors will not receive a new Instructor card after viewing the program; complimentary access is granted so that you are aware of what instructors in your Chapter may use as a resource to update to the 6th edition ITLS provider manual.

Any Chapter Coordinator or Medical Director who wishes to utilize the program to renew his or her instructor card and receive continuing education credit must purchase the program online through the ITLS Bookstore for \$25. No Chapter pricing or discount is available for this item.

Eligibility Requirements for Current Instructors

The ITLS Board of Directors has set the following requirements to determine whether an instructor is eligible to recertify using the Instructor Update Online. Candidates must meet **all** requirements.

1. The ITLS 6th Edition Instructor Update Online program is designed as a renewal tool for instructors who have not yet been updated to the changes in the 6th edition ITLS for Prehospital Care Providers manual.
2. Candidates must be seeking ITLS Instructor recertification/renewal. This program cannot be used by Providers seeking first-time Instructor certification.
3. Candidates must hold a valid ITLS Instructor card with an expiration date of January 1, 2006 or later. If candidates do not possess a hard copy of their card that meets these requirements, they may submit a letter of verification from their Chapter Coordinator or Chapter Medical Director as an alternative. This letter must state that the candidate is an approved ITLS Instructor and the Chapter grants permission for said instructor to renew their certification through this program.
4. By purchasing and viewing the program and completing the exit survey, the candidate attests that he/she has met the

Continued on Page 7

ITLS Board of Directors Election Results

ITLS chapter delegates elected three members to the Board of Directors at the 2009 Business Sessions in Charlotte.

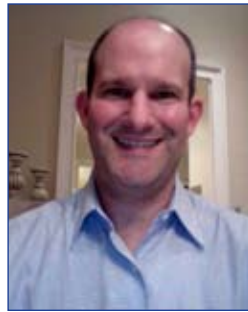
Elected were:

- Jonathan L. Epstein, MEMS, NREMT-P (Massachusetts)
- William Pfeifer III, MD, FACS (Colorado)
- Wilhelmina Elsabe Nel, MD (South Africa)

Martin Friedberg, MD, CCFP (EM), of Toronto, Ontario, Canada, chose not to stand for re-election to the Board after serving two terms. Chair Pete Gianas, MD, thanked Dr. Friedberg for his enduring commitment and service on behalf of the Board and the organization. Dr. Friedberg continues to serve ITLS as the Chapter Medical Director for ITLS Ontario.

The Board of Directors officers selected for 2009-2010 are:

- Pete Gianas, MD (Florida) – Chair
- Sabina Braithwaite, MD, MPH, FACEP, NREMT-P (Virginia) – Vice Chair



**Jonathan L. Epstein,
MEMS, NREMT-P**



**William Pfeifer III,
MD, FACS**



**Wilhelmina
(Elsabe) Nel, MD**

- Neil Christen, MD, FACEP (Alabama) – Secretary Treasurer
- Tony Connelly, Sr. Para., BSc. (Alberta) –Member at Large

Continuing to serve as President is:

- John Campbell, MD, FACEP (Alabama) – President

Mr. Epstein is Executive Director of NorthEast Emergency Medical Services, Inc. for the Massachusetts Region III EMS Council in Wakefield, Mass. He is also the chapter coordinator for ITLS Massachusetts. This is Mr. Epstein's first term on the Board.

Dr. Pfeifer is a Trauma/Critical Care Surgeon at Littleton Medical Center

in Littleton, Colo. He is the chapter medical director of the Colorado chapter, a member of the ITLS International Editorial Board, and chair of the Military/Tactical Committee. This is Dr. Pfeifer's third term on the Board.

Dr. Nel is a physician and clinical manager of the Trauma and Emergency Unit at Rosepark Hospital in Bloemfontein, South Africa. She is also a founding member and chapter medical director of the Southern Africa chapter. This is Dr. Nel's first full term on the Board. In 2008, she was elected to complete the term of Walter Bradley, MD, MBA, FACEP after he stepped down.

Reminder: Deadline to Submit Payments for Courses to Be Included in '10 Delegate Count

Wednesday, March 31, 2010 marks the last day that payments and course rosters can be submitted to ITLS International in order to be included in the delegate allocations for the

2010 Business Sessions at the International Trauma Conference.

Delegate counts for 2010 will be determined based on the number of students trained by the Chapter

in 2008 and 2009. Both the completed course rosters and payments must be received by ITLS on or before March 31 in order to be eligible. Contact Gloria Pappas at gloriap@itrauma.org with questions.

Annual Awards Recognize Leadership, Commitment

ITLS presented its annual awards at the 2009 International Trauma Conference to honor six individuals for their ongoing commitment to ITLS.

David Maatman, NREMT-P/IC, ITLS Michigan Chapter Coordinator, was presented with the Jackie Campbell Award for his enduring service to the organization as the "wind beneath our wings." Mr. Maatman, a member of the ITLS Editorial Board, was pivotal in 2009 in accomplishing several major projects, including the ITLS Pediatric materials, for which he served as Task Force Chair and Lead Reviewer; the development of ITLS eTrauma, as a lesson content writer, reviewer, Implementation Task Force member, and pilot site coordinator; and the 6th Edition ITLS Instructor Update Online.

Jim Boise, RN, CCRN, CFRN, of Arizona, was honored with the ITLS Ambassador Award for his dedication to promoting ITLS programs and for demonstrating a clear understanding of the ITLS mission. Mr. Boise has been a frequent presenter at the International Trauma Conference, teaching at the 2005, 2007 and 2009 programs. A longtime instructor, Mr. Boise is also very active within the ITLS Arizona chapter, serving on the Advisory Committee since 2000.

Mary Hancock, MD, FACEP, ITLS Ohio Medical Director, was honored for her outstanding medical direction of

courses and ITLS leadership with the John Campbell Medical Director of the Year Award. This is the second time Dr. Hancock has received this award for her continued commitment and dedicated leadership of the ITLS Ohio chapter.

Youta Kanesaki, EMT-P, ITLS Japan Chapter Coordinator, was presented with the Pat Gandy Coordinator of the Year Award for his leadership in promoting ITLS and prehospital trauma training. Under Mr. Kanesaki's direction, the Japan chapter has become one of ITLS' most active chapters and has aided with Japanese translations of the textbooks.

The Ray Fowler Instructor of the Year Award was awarded to Fred Zeidler, MD, of Croatia, for his excellence in teaching and innovation in ITLS programs. Dr. Zeidler could not attend the conference to receive his award in person, so Dr. Fowler, a conference presenter this year, illustrated Dr. Zeidler's numerous accomplishments and qualifications.

The Harvey Grant Memorial Award for excellence in developing and promoting ITLS Access programs was presented to Brandon Kenall, EMT-P, of the Missouri chapter. Mr. Kenall is a paramedic at St. John's EMS in Buffalo, Mo.

View photos of the awards ceremony online at ITRAUMA.org.

Issue of ITLS Written Exam Passing Score Clarified

There has been some confusion on the minimum written test score percentage needed to pass the ITLS written tests. To pass the ITLS written tests, the stated minimum is 74%. Because the number of test items is 33, a score of exactly 74% cannot be achieved. For these particular tests, a learner's minimum score needs to be at least 76% (maximum eight questions wrong); nine wrong questions yields a 73% which does not meet the minimum. We apologize for any confusion this has caused.

ITLS 6e Manual Translated into Spanish Slated for '10 Release

The Spanish translation of the ITLS 6th edition Provider Manual is in the works and is expected to be released in late 2010. Prices will be announced in a future issue of Chapter News. The 6th Edition Instructor Update slides translated into Spanish are available now. Request this material from Sue McDonough by email to suem@itrauma.org.

ITLS Editorial Board Responds to Issue with King Airway Device, FDA Warning

The ITLS Editorial Board has released the following statement in response to a U.S. Food and Drug Administration (FDA) warning issued to King Systems regarding its marketing for the King LT(S)-D oropharyngeal airway for off-label use:

ITLS incorporates various medical equipment and medication management options within its instructional materials based on currently available scientific evidence and expert consensus. Ability for providers to use and apply these patient care options is dependent on approval by their medical oversight and laws of the country and locality where they practice.

The Editorial Board also referenced the following statement from the

FDA on "off-label" use of marketed drugs, biologics and medical devices:

"Good medical practice and the best interests of the patient require that physicians use legally available drugs, biologics and devices according to their best knowledge and judgment. If physicians use a product for an indication not in the approved labeling, they have the responsibility to be well informed about the product, to base its use on firm scientific rationale and on sound medical evidence, and to maintain records of the product's use and effects."

The Editorial Board's position is the result of a warning issued by the FDA in October. The Office of Compliance in the Center for Devices

and Radiological Health reviewed King Systems' website for the King LT(S)-D oropharyngeal airway product and found that the device was being marketed as "intended for airway management in patients over four feet in height for controlled or spontaneous ventilation ... for difficult and emergency airway cases ... and as well-suited for ambulatory and office-based anesthesia."

However, the FDA said the device was solely approved for use of "controlled ventilation during anesthesia" for short procedures in adults, when patients are considered at low risk of aspiration of stomach contents. A link to the complete warning level can be viewed online at the ITLS website, www.itrauma.org.

2010 ITLS European Meeting Announced

The ITLS Italy Chapter will again present its ITLS European Meeting in 2010 to bring together the European ITLS Chapters with other medical specialists, nurses and volunteers from Europe, engaged in management of prehospital emergency care.



The 2nd annual conference will be presented April 16-17, 2010, at the Abitalia Park Resort in Pisa, Italy.

Among the speakers already confirmed are:

- Sabina Braithwaite, MD, MPH, FACEP, Vice Chair of the ITLS Board of Directors
- Jim Boise, RN, CCRN, of the ITLS Arizona Chapter
- Pete Ganas, MD, Chair, ITLS

Board of Directors

- Youta Kanesaki, EMT-P, Chapter Coordinator for ITLS Japan
- Ginny Kennedy Palys, JD, Executive Director, ITLS International
- Piero Lippolis, MD, Chapter Coordinator for ITLS Italy
- Many other trauma experts from Europe

An English translation of the Preliminary Program will be available soon and posted on the ITLS website, www.itrauma.org. The Italian-language program can be viewed online now.

2010 International Trauma Conference Planned for Reno, Nevada in November

Blue skies and open roads are on the horizon for ITLS! Save the date and plan now to attend the 2010 International Trauma Conference on November 4-6, 2010, in Reno, Nevada.

CONFERENCE HOTEL
Atlantis Casino Resort Spa
3800 S. Virginia Street
Reno, Nevada 89502
Phone: 775-825-4700
or 1-800-723-6500

The Atlantis Casino Resort Spa brings together all the elements of both a perfect conference hotel and an ideal getaway: a desirable location, the finest service and dining in northern Nevada, non-stop nightlife, and the refuge of a brand-new spa. The full-service resort includes all this



and more in the heart of Reno's new restaurant and shopping district, just minutes from the airport and downtown Reno.

A special rate of \$99 per night plus all applicable taxes has been arranged for conference participants and exhibitors. Use Group/Convention Code ITLS when making your reservation. The cut-off date for this rate is Octo-

ber 11, 2010. The hotel also offers complimentary shuttle service from the airport for registered guests.

For information, watch www.itrauma.org/conference. Updates will be posted frequently. We look forward to seeing you in Reno in November and hope that representatives from all of

our chapters will be able to join us.

Call for Competition Teams

ITLS is accepting applications for teams for the 2010 ITLS Competition. Join teams from around the globe as they use the ITLS model to assess and treat trauma victims in a realistic, case-based scenario. An application is available on Page 7. Contact Lora Finucane at loraf@itrauma.org with questions.

Instructor Update Online Available From Page 3

Chapter's teaching requirements for instructor recertification. Candidates who are uncertain whether they meet their Chapter's requirements for instructor recertification should contact their Chapter before purchasing this program.

Instructor Recertification issued via the ITLS 6th Edition Instructor Update Online will be rendered invalid and revoked if the Instructor has not fulfilled his/her Chapter teaching requirement(s).

Additional instructor requirements may be established by a Chapter.

Chapter Roles

Quarterly, ITLS will query the database on a Chapter basis to report to each Chapter any students who have renewed their Instructor status using the ITLS 6th Edition Instructor Update Online.

The spreadsheet will be emailed to the Chapter Coordinator with the student's new card number and date

of card issuance. It will be up to the Chapter to enter this updated information into their instructor's record in CMS.

Students will be encouraged to contact their Chapter immediately with this information upon receiving new card as well.

If you have any questions about the Instructor Update Online, contact Kate Blackwelder at kateb@itrauma.org or 888.495.ITLS, ext. 205.

CMS How to: Generate a List of Faculty Who Have Attended an Instructor Update

With the debut of the 6th Edition Instructor Update Online, several chapters have inquired about a way to use CMS to track those instructors in their chapter who have already attended an Instructor Update course.

While CMS does not have an instant solution to generate a report with this information, you can use the CMS Report tools to compile it in an efficient manner. Follow this step-by-step guide to create the list.

1. Go to the Reports tab and select the Course Tracking option. Enter your date parameters, if there are any. (Entering no dates will bring up a list of all completed courses in your chapter since the introduction of the CMS.)
2. Hit View Report button to generate report on-screen.
3. Export report to Excel by selecting the Export List to Excel button and saving the file on your computer.
4. Open the file and sort the data. Sort by the Type of Course column first, and delete all courses that are **not** Instructor Recert/ Refresh/ Update. (Remember that Instructor Recert courses may be Advanced, Basic, or Combined, so be sure to check for all of these options when deleting courses that do not apply.)
5. When your data has been sorted, you are left with a course list of all Instructor Recert/ Refresh/ Update courses run in your Chapter. This will

be referred to as Spreadsheet 1 in the following instructions. Spreadsheet 1 includes all the course information, including the Course ID number and the Number of Students. To see a total of the number of students who have attended an Instructor Recert/Update, convert all cells in the "Number of Students" column to a number (click the yellow exclamation point that appears next to the cell) and then use the Sum feature in Excel.

6. If you wish to create a list of the students in each of the courses, continue on by creating a new sheet or Excel document to add this data. We will refer to this spreadsheet as Spreadsheet 2 in the following instructions.
7. Return to the CMS and select the Search Courses option (from the Courses tab).
8. Enter the Course ID number of the first course on your list, and hit Search Courses button.
9. When results are returned, right-click on the course and select Roster, Scores and Faculty option.
10. When the Course Roster loads, hit Export to Excel button. When prompted to Open or Save, select Open.
11. A new Excel spreadsheet will open with the list of students and the data for each student entered into the course. We will refer to this as Spreadsheet 3. Copy and paste the

data from Spreadsheet 3 (opened through CMS) into the new spreadsheet, Spreadsheet 2, that you created for this purpose.

12. Close Spreadsheet 3.
13. Save changes to Spreadsheet 2.
14. Double-check for accuracy: The number of students just copied and pasted into Spreadsheet 2 will match the Number of Students shown on Spreadsheet 1 for the Course ID.
15. Return to CMS and repeat steps 8-14 for all courses listed on Spreadsheet 1.
16. When finished, you will have a complete list of all faculty members who have taken an Instructor Recert/ Update course on Spreadsheet 2.

— Thanks to ITLS Pennsylvania Chapter Coordinator Bob Seitz, M.Ed., RN, for suggesting this topic.

NOTE: If you have a question that you would like answered about CMS, please email Kate Blackwelder at kateb@itrauma.org. Questions and answers will be published in future issues of ITLS Chapter News so that all Chapters can benefit.

For more step-by-step "how to" guides, make sure to download the CMS Users' Guides. Guides for Chapter Coordinators and Course Coordinators can be downloaded from the Home Screen after you log in to CMS, by selecting an item from the Help drop-down menu.

2010 ITLS COMPETITION

Information

November 4-6, 2010 Reno, Nevada, USA

The competition will be divided into a preliminary round and a final round. The preliminary round will be on **Thursday, November 4, 2010**. The three top teams will advance to the final round held on **Friday, November 5, 2010**.

Information

- Each team should consist of three members and one alternate. All team members are required to be ITLS providers or instructors.
- Each team will have an opportunity to familiarize themselves with the equipment available during the scenario before competing.
- All team members are required to be registered for the conference.
- The winning team will be awarded complimentary registration to the 2011 conference.
- Finalists will have their chapter names engraved on the annual ITLS International competition plaque kept at the ITLS office.
- The winning team will receive an engraved plaque for their chapter.
- Competition results will be announced and all teams will be recognized at the conference.
- Teams will supply their own jump bag. You will have all necessary large equipment to manage the patient available to you on-site, and will have an opportunity to review the equipment just prior to both rounds of the competition.
- Please submit requests for additional equipment in writing no later than August 13, 2010.
- Space is limited. Teams will be accepted on a first-come, first-served basis.

Chapter: _____

Contact Name: _____

Contact Address: _____

City: _____ **State/Province:** _____ **ZIP/Postal Code:** _____

Country: _____

Phone: _____ **Email:** _____

Team Captain: _____ **T-Shirt Size:** _____

Team Members: _____ **T-Shirt Size:** _____

Please list credentials (MD, RN, EMT-P, etc.) for all team members. _____ **T-Shirt Size:** _____

Team Alternate: _____ **T-Shirt Size:** _____



3000 Woodcreek Drive, Suite 200 Downers Grove, IL 60515 USA
phone 888.495.ITLS int'l phone 630.495.6442 web www.itrauma.org email info@itrauma.org